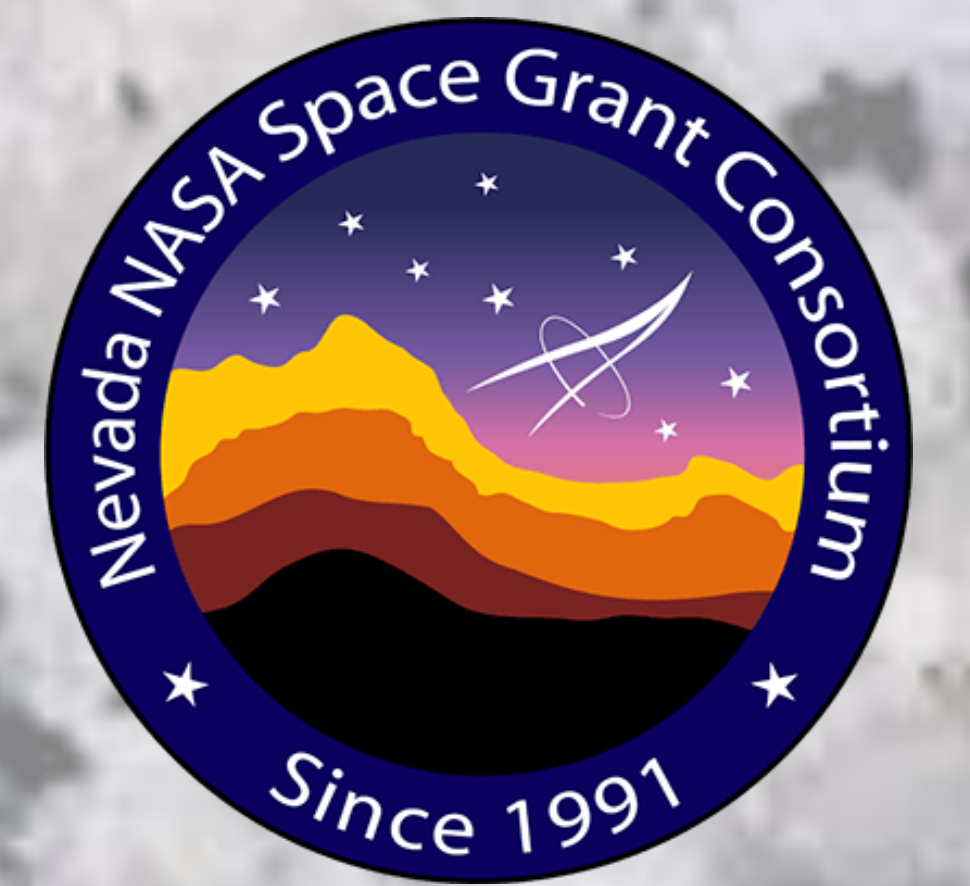




# Geologic Mapping Project of WNC Hill

## WNC Community of Practice

Emily Kreamer, Fraser Mason, Kadence Ortiz, Collin Parker, Camila Arechiga, Tanner Logan,  
Dr. Winnie Kortemeier, mentor



This work was supported in part by the National Aeronautics and Space Administration under Grant No. 80NSSC20M0043.

### Abstract

The WNC Community of Practice group of six students made a detailed geologic map of the hill to the north of the WNC campus. Students learned:

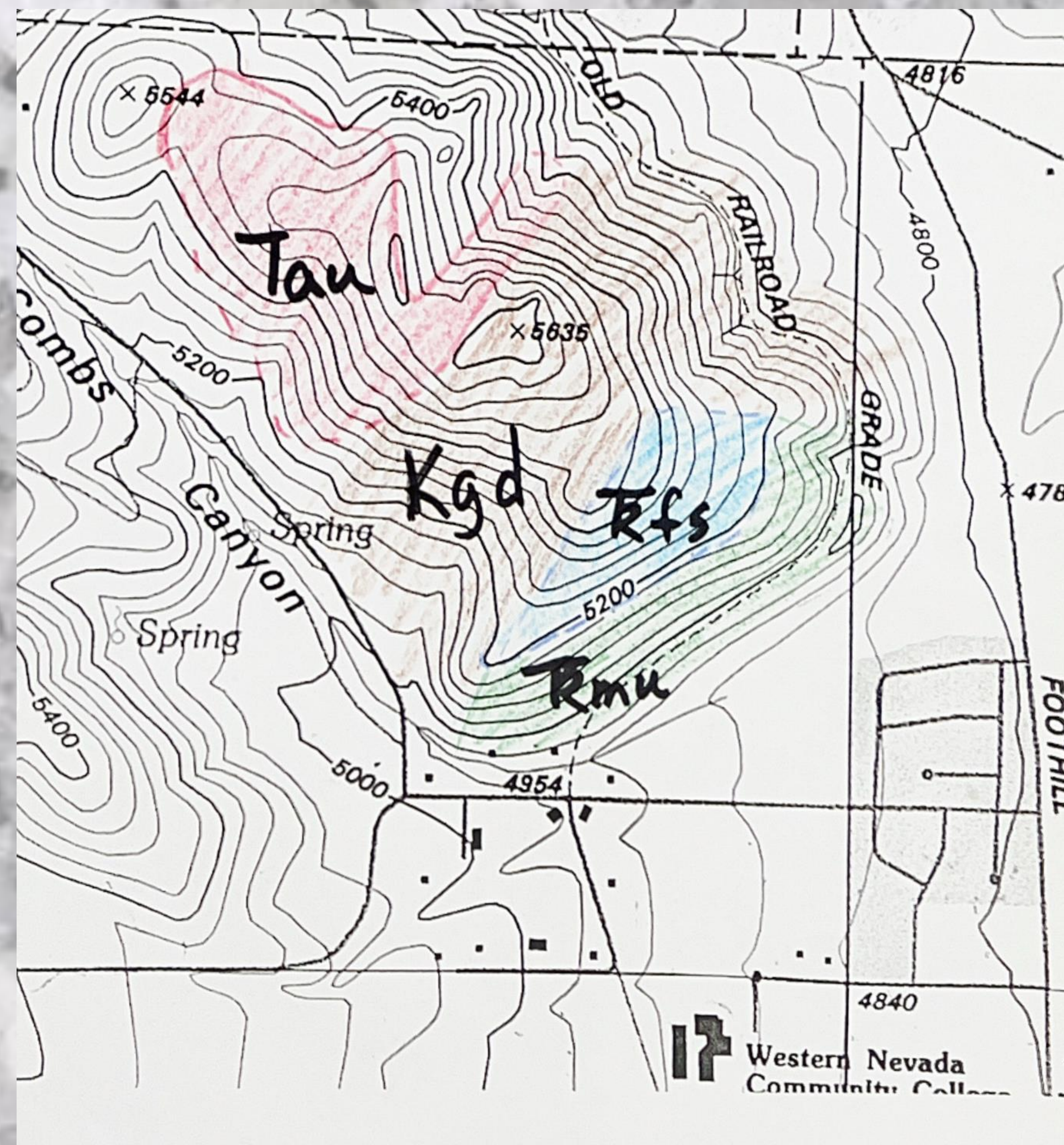
- how to do geology field work
- how to use geologic tools such as a Brunton compass
- how to take geology field notes
- how to take meaningful photos of rocks and outcrops
- how to collect and curate rock samples
- how to produce a geologic scientific poster



### Tools for sampling



### Rock types



### Orientation of the Rocks: how to take a strike and dip



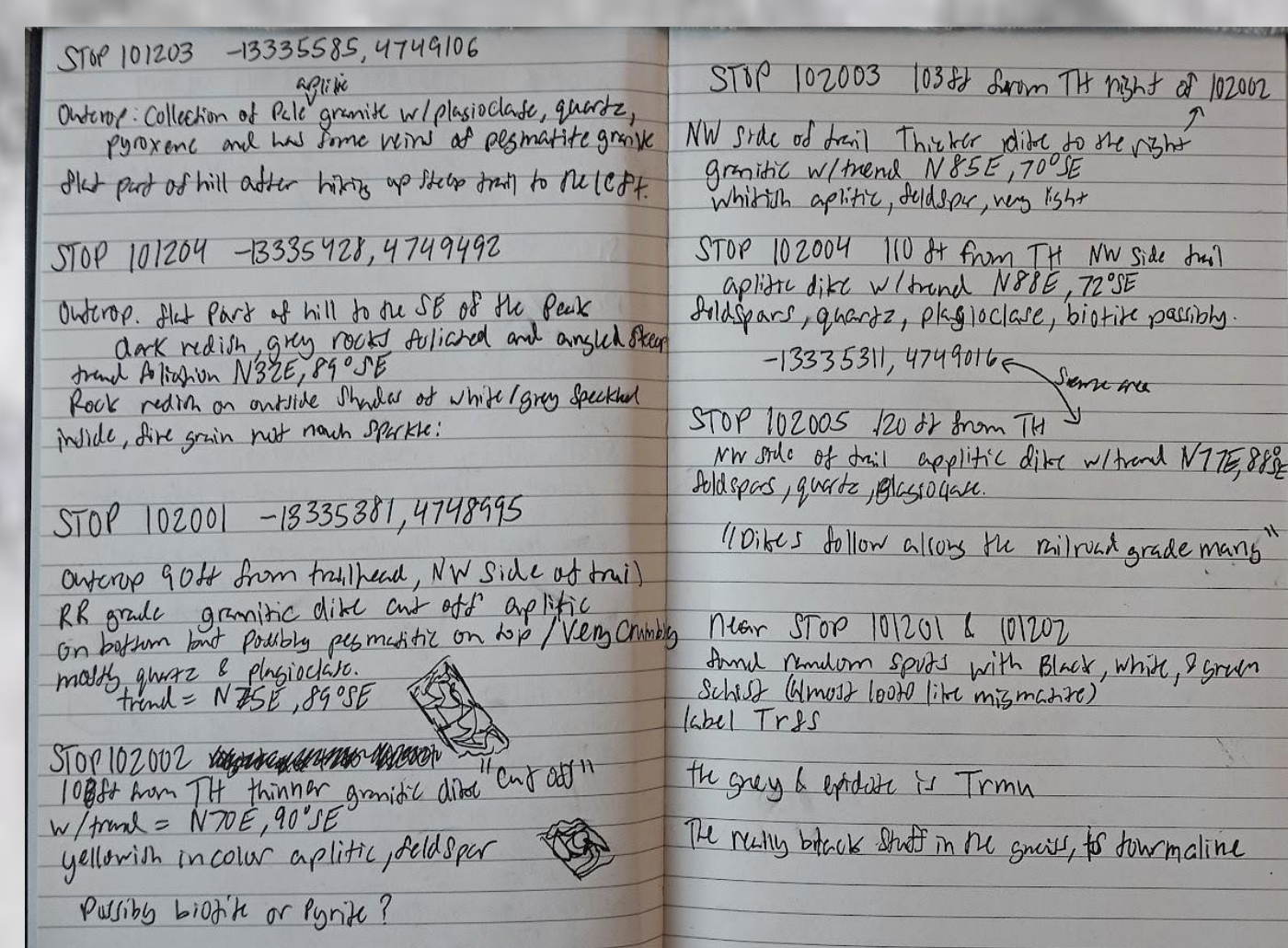
Strike is the direction that a rock face is oriented across a level line

Dip is the angle that the rock dips into the ground



### Brunton Compass.

### Journal Example



### Necessary details:

- Stop number (includes month, day, and number of stops in that day).
- Strike/dip data
- Any additional details (outcrop shape, minerals, colors, type of rock, illustration, etc).



### Acknowledgements

- WNC Grants office for administrative help
- Elizabeth Tattersall and Christian Copley-Salem for Community of Practice advise